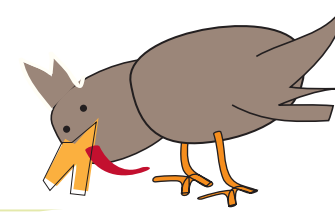
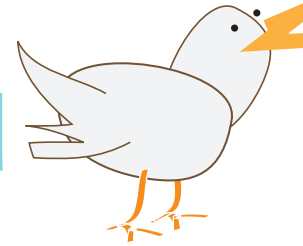


breakfast menu

February 2017



monday	tuesday	wednesday	thursday	friday
		HOT! February 1st Breakfast Burrito Fruit Milk	February 2nd Cinna Raisin Bagel w/ Cream Cheese Fruit Milk	HOT! February 3rd Cheesy Omelet WG Bread Fruit Milk
February 6th Cereal Fruit Milk	HOT! February 7th Waffle w/ Compote Fruit Milk	February 8th Blueberry Bread Yogurt Fruit Milk	February 9th Whole Grain Bagel w/ Cream Cheese Fruit Milk	HOT! February 10th Scrambled Eggs WG Bread Fruit Milk
February 13th Cereal Fruit Milk	February 14th Granola Bar Fruit Milk	HOT! February 15th Turkey Ham & Cheese Breakfast Sandwich Fruit Milk	February 16th Cinna Raisin Bagel w/ Cream Cheese Fruit Milk	February 17th Pumpkin Muffin Fruit Milk
HOT! February 20th Waffle w/ Compote Fruit Milk	February 21st Cereal Fruit Milk	HOT! February 22nd Baked Fresh Toast Fruit Milk	February 23rd Whole Grain Bagel w/ Cream Cheese Fruit Milk	February 24th Blueberry Muffin Yogurt Fruit Milk
February 27th Cereal Fruit Milk	February 28th Banana Bread Yogurt Fruit Milk			